



Français	Contact Us	Help	Search	Canada Site
CFS Home	PFC Home	What's New	FERNS Links	NRCan Home



Forest Ecosystem Research Network of Sites

[Ecology](#) > [FERNS](#) > [Boreal Plains](#) > [Alcott Creek](#)

Alcott Creek Forest Management Demonstration Area



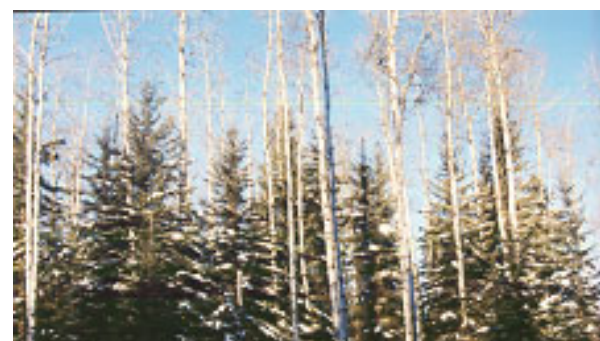
Ecozone : Boreal Plains **Ecoregion** : Mid-Boreal Uplands

Location : 40 km south of Meadow Lake, Saskatchewan along the east side of Highway #4.

[[Background](#) | [Site Characteristics](#) | [Current Research](#) | [Principal Contacts](#)]
 [[Partners](#) | [FERNS Home Page](#) | [Alternative Harvesting Study](#)]

Background

The Alcott Creek Forest Management Demonstration Area was established in 1993/94 as a demonstration of management by prescription on a controlled site in the Boreal Plains Ecozone of west central Saskatchewan. The demonstration area was designed to be a working



- ▶ Introduction & Site Criteria
- ▶ Links

FERNS Sites:

- ▶ Atlantic Maritime
- ▼ Boreal Plains
 - Alcott Creek Forest Management Demonstration Area
 - Ecosystem Management by Emulating Natural Disturbance
 - Hotchkiss River Mixedwood Timber Harvesting Study
- ▶ Boreal Shield
- ▶ Pacific Maritime
- ▶ Montane Cordillera
- ▶ Taiga Plains

research and public awareness forest for local groups, interested forest managers, and practitioners wishing to use the site as a teaching and study area.



The demonstration of various commercial management practices in jack pine and white spruce (softwood) dominated, aspen dominated and mixedwood (combinations of both) forest stand types were installed using both operational and applied research treatment specifications. Newly introduced innovative silviculture treatments, specifically site preparation, were demonstrated and tested within the various forest stand types during the initial establishment process. Formal research studies looking at Wildlife Habitat, Forest Diversity, Forest Productivity, Partial Harvest Silviculture Systems, and Intensive Management were installed to support Mistik Management Ltd's planning process and knowledge of the ecological effects of forest management practices.



Researchers from the University of British Columbia, Yale University, the University of Saskatchewan and the Canadian Forest Service cooperate with Mistik Management Ltd in the design, installation, assessment, and result reporting of the various studies within the Alcott Creek Forest Management Demonstration Area.

[[Top](#)]

Site Characteristics:

Excellent historic information is available, from initial planning, through treatment installations, to continued monitoring. The whole area has been ecosystem classified and is progressively updated using GIS tracking system. Instrumented weather information is also being collected on various sites by the local researchers. The Alcott Creek site is protected under the local Forest Management Agreement and which is managed by Mistik Management Ltd..

Access to the area is excellent, with primary access from a paved highway (Hwy 4) and a network of primary and secondary haulroads branched through the Alcott Creek Demonstration Area. The site is a half hour from Meadow Lake, 1 hour from the



Yellowhead Hwy 16, 2 hours from Saskatoon and 4 hours from Edmonton.

Within the Boreal Plains Ecozone this area is representative of the Mid-Boreal Uplands Ecoregion with primary forest cover being Jack Pine, White Spruce, Aspen, Black Spruce, Balsam Fir, Balsam Poplar and White Birch in pure and mixed stands. There are numerous lakes, rivers and streams, and associated riparian areas are distributed throughout the Alcott Creek Forest Demonstration Area.



The site is comprised of stands of various ages and species mixes, and as such, mature forest stands, adjacent to ones under management, are included in the research studies as controls. Some may be harvested in the future while others will not. There will also be new installations added using practices designed from the research results of the active studies. This will insure progressive relevance and impact on the long term sustainability of the Alcott Creek Forest Demonstration Area.

[[Top](#)]

Current Research

[Alternative harvest methods and ecosystem processes studies](#) are included in active research studies and are multi-disciplinary and multi-partnered in all cases. This is an progressive research area that will continue to refine and add studies as results and practices deem necessary.

Proponents:

Primary :

Mistik Management Ltd.

Contact: Roger Neddoly, Coordinator Integrated Resource Planning, Phone 306-236-4431, email: roger.neddoly@mistik.sk.ca

Tim Keddy, District Forester, Phone 306-236-4431, email: tim.keddy@mistik.sk.ca

Cooperating:

[Canadian Forest Service](#), Contact: Derek Sidders, Silviculture Operations Specialist, Phone: 780-435-7355, Email: dsidders@nrcan.gc.ca

Partners:

Canadian Forest Service

University of British Columbia

University of Saskatchewan

Yale University

Saskatchewan Environment and Resource Management

[[Background](#) | [Site Characteristics](#) | [Current Research](#) | [Principal Contacts](#)]
[[Partners](#) | [FERNS Home Page](#) | [Alternative Harvesting Study](#)]

Last Updated: 2004-01-29



[Important Notices](#)